



Watts Gallery

Down Lane

Compton

Guildford

Surrey

GU3 1DQ

Watts Gallery founded in 1904 has continued to be the chief repository of G. F. Watts's work. The extensive collection of paintings, sculptures and ceramics is much admired.

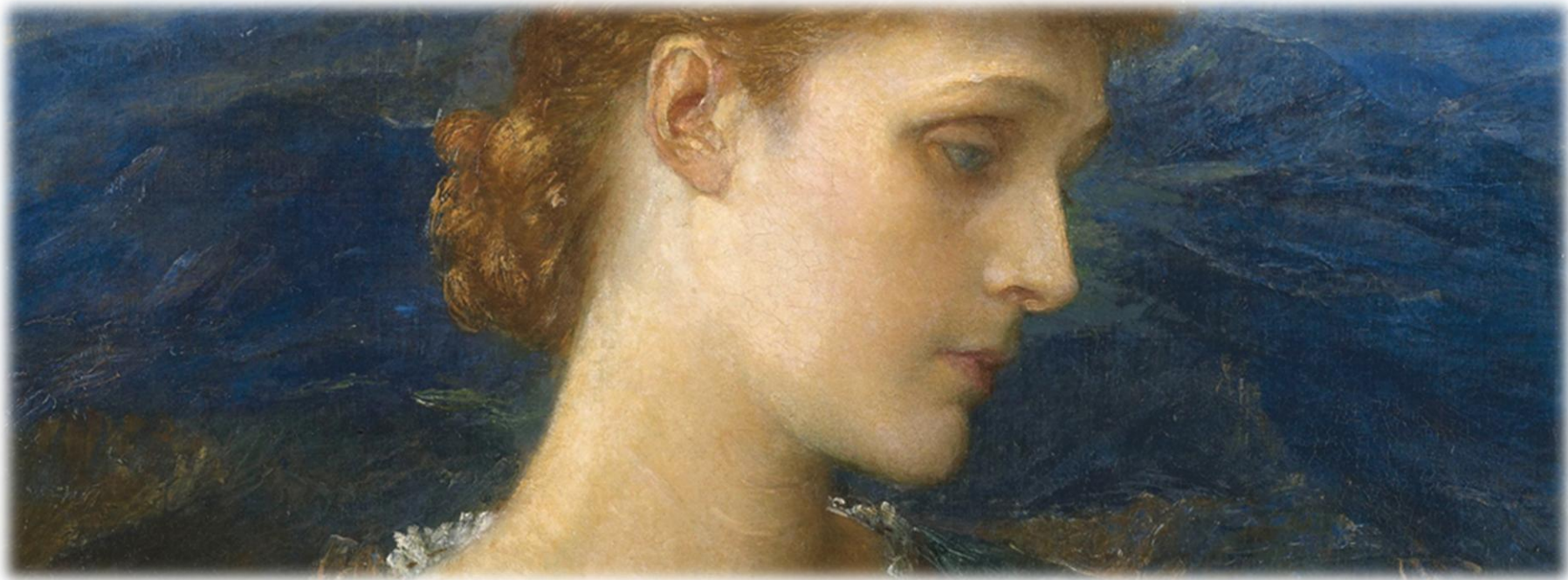
Become a Volunteer at Watts Gallery - Artists' Village

Volunteers give vital support to the Artists' Village, contributing in many different ways from engaging with visitors as stewards in the galleries to supporting the Curatorial Team to assisting at events and workshops. Discover all the Artists' Village has to offer while acquiring new skills and meeting likeminded people

(Left) "Clytie", Watts's first large, ideal sculpture in the round, was the only sculptural subject exhibited during his lifetime

A corner of Watts Gallery

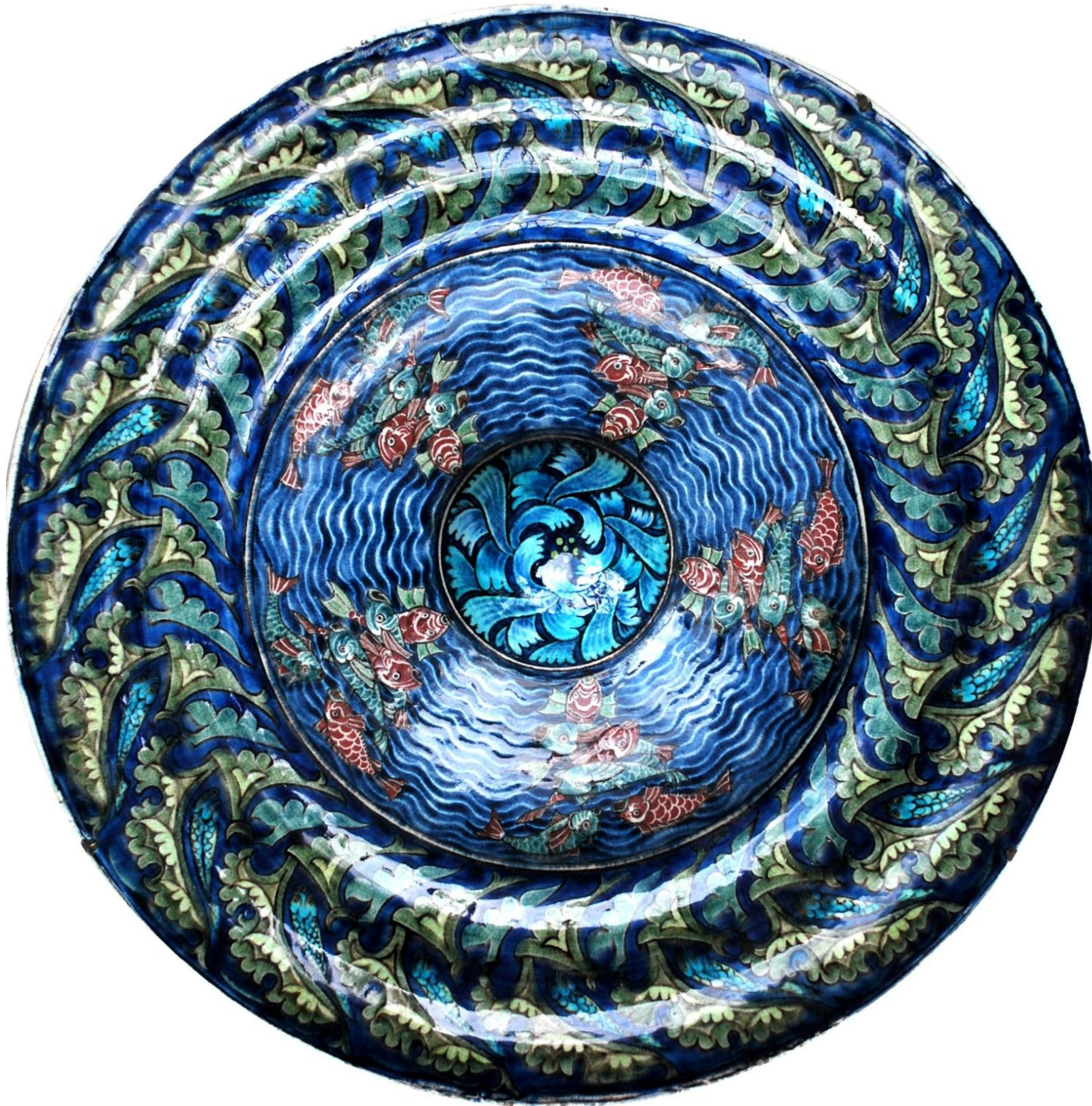




Violet Lindsay was one of the most glamorous social figures of the Victorian period. The Watts Gallery Trust was thrilled to announce that it had acquired this beautiful Watts portrait of her.



This intricate self-portrait demonstrates Watt's adept handling of charcoal pencil by the time he was just fourteen years old.



This unusually shaped dish with a boss in the centre is known as a rice dish. The fish, waves, petal and leaf motifs and the colours are all inspired by the ceramics of the Middle East.



Once safely established as a subject painter and portraitist Watts turned seriously to sculpture in his fifties. He wanted to create large public works to be displayed in easy to visit places. This full-scale equestrian model symbolises energy, continual motion, and ambition, suspended in time.



YOUNG ARTS AT WATTS GALLERY

Woking DFAS has contributed towards workshops at Watts Gallery for young people.