

Art, Gardens and Châteaux of Normandy

Woking DFAS Tour

11th to 15th June 2015



[Top left & right: MONET'S FLOWER & WATER GARDENS AT GIVERNY](#)

[Bottom left: CHATEAU DE BEAUMESNIL](#) [Bottom right: LE JARDIN PLUME](#)

Tour Guide: Mrs Helen McCabe. Helen is a NADFAS accredited lecturer. Her lectures to Woking DFAS have been voted "excellent". Helen read French at university and studied history of art and architecture in Paris where she lived for years. She is an experienced gardener having created her own woodland garden near Penzance in Cornwall. During our journey from Calais to Rouen, Helen will remind us of our early links with Normandy. She will tell us of Rouen's two thousand years of history, remind us that Joan of Arc was tried and burned here at the stake in May 1431. She will talk of the architecture, the ancient half-timbered houses, the Gothic churches including the magnificent Cathedral immortalised by Monet's paintings and the impressive Le Gros Horloge. Each day on our trips she will prepare us with details of the gardens, the châteaux and their inhabitants. She will talk about Lutyens when we visit le Bois des Moutiers and, of course, relate Monet's story before we arrive at his gardens and house in Giverny.

[Please contact Caroline Symington carosymington@gmail.com if you would like to come. She will be taking names as from now of those who are interested prior to taking firm bookings from September.](mailto:carosymington@gmail.com)

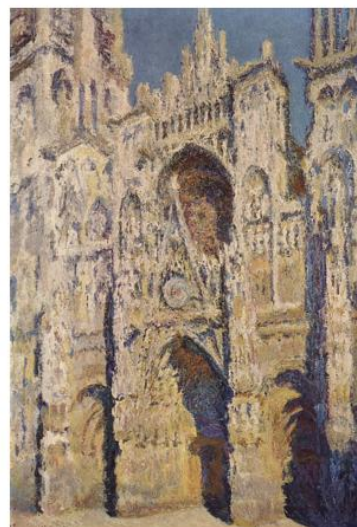
ITINERARY



JOAN OF ARC



LE GROS HORLOGE



ROUEN CATHEDRAL BY MONET

[t](#)

Travel by Safeguard Coaches and return ferry crossings from Dover/Calais.

Stay in historic Rouen in the **4 Star Hotel Mercure Champ de Mars** (Michelin recommended)

Thursday 11th June

- 8:30 am : Depart from Bisley by touring coach(loo on board) to Dover, ferry to Calais, onward to Rouen with a comfort stop, arrive at our Hotel at about 5:30 pm
- 3 course dinner in Hotel

Friday 12th June (Leave hotel at 9:00am)

- Le Vasterival
- Le Bois des Moutiers
- L'église de St Valery
- Château de Miromesnil

Saturday 13th June (Leave hotel at 9:00)

- Monet's gardens and house in Giverny
- Jardins d'Angelique
- Le Jardin Plume

Sunday 14th June (Leave hotel at 2:00pm for afternoon visit)

- Free morning to enjoy the sights of Rouen and go shopping in the Sunday market. In the evening of the previous two days you may decide to have a wander round Rouen centre which is a 10/15 minute walk from the Hotel. Some of the options to see or visit are listed in the brochure on the website. In the afternoon we will visit the Château de Beaumesnil

Monday 15th June (Travel home leaving hotel at 9:00)

En route visit and château Mesnil Geoffroy arriving back at Bisley at around 8:00pm

Price per person £675.00 (Single Supplement £194.00)

MONET'S HOUSE & GARDEN AT GIVERNY

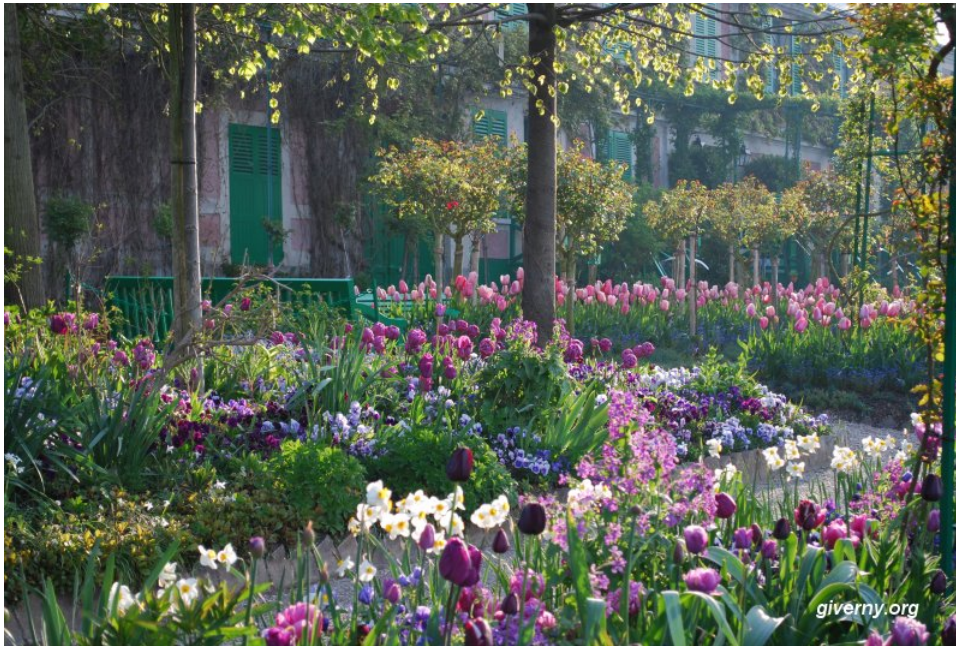


Photo of spring flowers in Monet's garden at Giverny



Painting by Monet of The flower Garden at Giverny

The whole of Giverny (if not all of Normandy) is suffused with the spirit of Claude Monet. Half close your eyes when you are in the flower or the water garden and you can imagine him at his easel endlessly capturing with his brush strokes the colours and the beauty of his lovingly created garden. Many believe that never before had a painter so shaped his subjects in nature before painting them.

MONET'S HOUSE & GARDEN AT GIVERNY



The Japanese bridge over the water lily pond. Monet was fascinated by reflections on water



I took this photo in April 2014 because I was touched by the Lady Gardener's loving care of the plants.

LE JARDIN PLUME



Caroline meeting M Quibel (Owner). Patrick Quibel and his wife created the garden from a typical Normandy orchard from 1997 onwards. This garden delighted Monty Don who included it in a documentary on gardens in Normandy.



Le Jardin Plume in summer. It has a formal layout of clipped box in a square edged pattern. Each box is filled with natural plantings of grasses and perennials

Chateau du Beaumesnil



Chateau Beaumesnil

Beaumesnil is a masterpiece of the Louis XIII baroque style. It is partially classified as a French historical monument

Much of the estate to the east of the chateau is wooded with a *parterre* laid to lawn, almost a kilometre in length, providing impressive perspectives from the chateau's state rooms. The *parterre* is broken by a large pond, approximately one hectare in area that has many features of a formal pond such as regular edging with specific geometric shapes

Two formal flower beds were laid out in the 18th century to the east of the chateau, the smaller *Jardin des quatre saisons* (Four Seasons garden) on the northern side of the forecourt and the larger semi-circular *Jardins demi-lune* (Halfmoon garden) on the northern bank of the moat.

As part of a conservation plan, a kitchen garden with over 500 varieties of ancient vegetables, including unusual varieties like devil's ear lettuce and rainbow corn has been cultivated

LE VASTERIVAL



Princess Greta Sturdza passed away on November 30th, 2009, age 96, surrounded by her beloved garden. Since 1995, when she moved to Normandy into the old house of well-known composer Albert Roussel with her Romanian husband and 3 sons, the princess organised her life around her garden. Over the years, she undertook the immense task of clearing 12 hectares of swampy forest on the edge of a windswept cliff top, with rigorous standards she set herself, and transforming them into a botanical garden with invaluable plant collections. Great care has been taken to ensure that Le Vasterival is a garden for all seasons.

We were shown round by Sybil who has worked for the Sturdzas for 30 years. Her knowledge, pride and love of the garden is immense and, just like the late Princess, she was armed with a long-handled, three-pronged tool which she used against any weed that dared to show its head.



Le Vasterival (Caroline with Sybil)

JARDINS d'ANGELIQUE



The Jardins d'Angelique were created by the owners in memory of their daughter.

The Jardins d' Anglelique has been created around a lovely manor house belonging to the owner. In front of the house is a large sweep of lawn edged with beautiful flower borders. It has the feel of an English Country Garden. Roses are a favourite plant and are planted in large numbers in the garden. Throughout the garden there are benches or ceramic bird baths or perhaps a plant in a pot or a well placed bench. Beautiful additions which add perfectly to the surrounding garden.



Château de Miromesnil



The château, birthplace of writer Guy de Maupassant, nestles in a cluster of beech trees near to the sea. Two totally different façades, large walled grounds, dominated by a two hundred year old cedar, a listed chapel hidden in the woods and a flowery kitchen garden invite you to rest and relax.



Landlords of the castle and passionate about the place, Jean-Christophe and Nathalie Romatet warmly invite you to discover this historical monument, its gardens and kitchen garden.

The chateau is stunning, beautifully decorated and well kept even though it is still lived in. The garden is beautiful and well kept. it is a kitchen garden so mainly useable vegetables but it is wonderful to see it in such amazing condition.

LE BOIS DES MOUTIERS



In 1898 Guillaume Mallet met the young British architect Edwin Lutyens. Sensing his exceptional abilities and impending brilliant career...The Cenotaph was one of his designs..... Mallet commissioned him to build the house at Le Bois des Moutiers. He then employed Gertrude Jekyll to select the species for the various gardens’.



We met Antoine Bouchayer-Mallet who is a fourth generation family member. He had interesting stories to tell of Lutyens the architect, of the cultural history and of the famous people who had an involvement in Moutiers. For Antoine the ideas of the theosophists and the arts and craft people have never gone away. “They stressed the human over the material, and they feared the ravages of hyper-industrialisation. How much more relevant could that be?.. he asks



Water Garden at Le Bois des Moutiers, Varengeville-sur-Mer, France by Lutyens & Jekyll

Château *du* Mesnil Geoffroy



Victor Hugo once stayed at this lovely château which is run by Prince and Princess Kayali. It is famous for its exceptional rose garden, the most important one in the region (2500 rosebushes) and for its Charmille (hedge) Labyrinth.



THE CHURCH OF ST VALERY AT VARENGEVILLE

The church of St Valery's history is linked with famous painters and creative people. Originally built in the 12th century, then enlarged in the 16th, the building has resisted storms and the assault of the waves that gnaw at the cliffs below.

The church at Varengeville by Claude Monet



Mosaic by Georges Braques who developed cubism with Pablo Picasso is buried here. The mosaic of blue and gray which forms part of his tomb recalls the colours of the Normandy coat of arms



In the church of St Valery is the stained glass window designed by Georges Braques. (See his signature in the bottom right.)

Albert Roussel, the composer, has an imposing carved tomb overlooking the sea. It is perhaps his naval career before he became a musician that made Roussel choose this cliff top churchyard as his last resting place. Influenced by Debussy's music, Roussel composed melodies and symphonies as well as an opera-ballet inspired by a voyage to India.

ROUEN BUILDINGS

PLACE de VIEUX MARCHÉ & HALF TIMBERED BUILDINGS



Place de Vieux Marche Rouen...This open market place was the site of Joan of Arc's immolation in May 1431



Caroline enjoying a sandwich in Rouen Centre

CATHEDRALE de NOTRE DAME



Cathedrale de Notre Dame

L'ÉGLISE DE ST-OUEN



LE GROS HORLOGE



The clock is installed in a Renaissance arch crossing the Rue du Gros-Gorloge, in Rouen. The mechanism is one of the oldest in France, the movement being made in 1389. The clock was originally constructed without a dial, with one revolution of the hour-hand representing twenty-four

hours The movement cast in wrought iron, is perhaps the largest such mechanism still extant. A facade was added in 1529. The Renaissance facade represents a golden sun with 24 rays on a starry blue background.

Many depictions of sheep show the importance of the wool trade in Rouen and the Paschal Lamb, which has been part of Rouen's coat of arms since the 14th century, is represented on the underside of the arch.

The phases of the moon are shown in the oculus of the upper part of the dial. It completes a full rotation in 29 days. The week days are shown in an opening at the base of the dial with allegorical subjects for each day of the week.

The mechanism was electrified in the 1920s and it was restored in 1997.



Le Gros Horloge Painting by J.M.W.TURNER

ROUEN MUSEUMS & GALLERIES

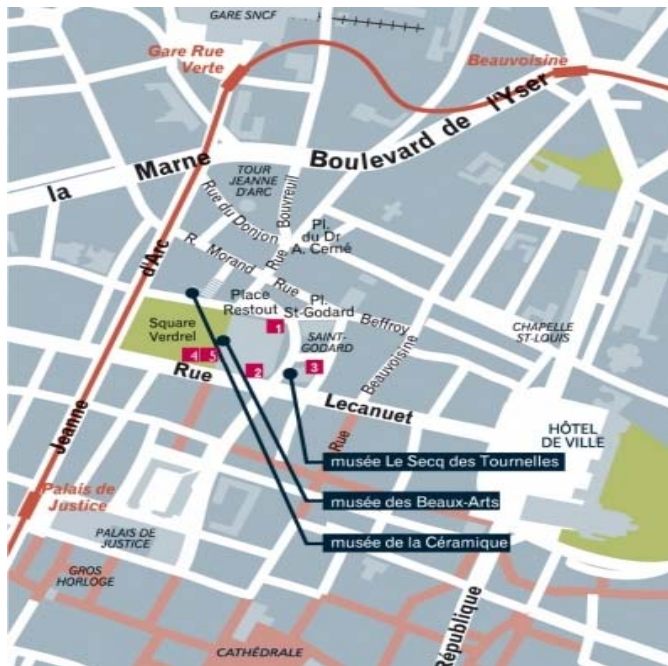


Figure 1 Comprehensive information is available on the website that covers all three museums (google: Musee des Beaux Artes, Rouen)

MUSEE des BEAUX ARTES

We were enchanted by this gallery and have selected, as shown below, two paintings from the impressionist section. The extent of the collections in the gallery can be seen by accessing their website. Claude Monet is well represented ...as well he should be as in Normandy his presence is everywhere.



Paintings in Musee des Beaux Artes: Top Monet, Bottom Sisley

MUSEE de la CERAMIQUE



This is a very unusual ceramic exhibit. Most of the other exhibits consist of ceramics for more conventional uses.

MUSEE Le SECQ des TOURNELLES



Musee Tournelles: Ceremonial key

One visitor to this museum wrote “the stuff in here is really nice. My favourite section is the chastity locks. Once you have been here, you will never look at wrought iron the same way again”

ST JOAN OF ARC



The church of Saint Joan of Arc was completed in 1979 in the Place du Vieux-Marché. This is the same location where Joan of Arc was burned alive for heresy in 1431 - a large cross outside the church marks the exact spot. The sweeping curves of the structure are meant to evoke the flames that consumed Joan of Arc



The stained glass windows came from the 16th century Church of Saint which was almost completely destroyed in 1944 during World War II, but fortunately the windows had been removed and stored in a safe location during the war. They were then incorporated into the Church of Saint Joan of Arc.